

Parkwood Court, Walsall Road, Four Oaks
Sutton Coldfield, B74 4QJ

Offers in the Region Of £180,000

Four Oaks

Offers in the Region Of £180,000

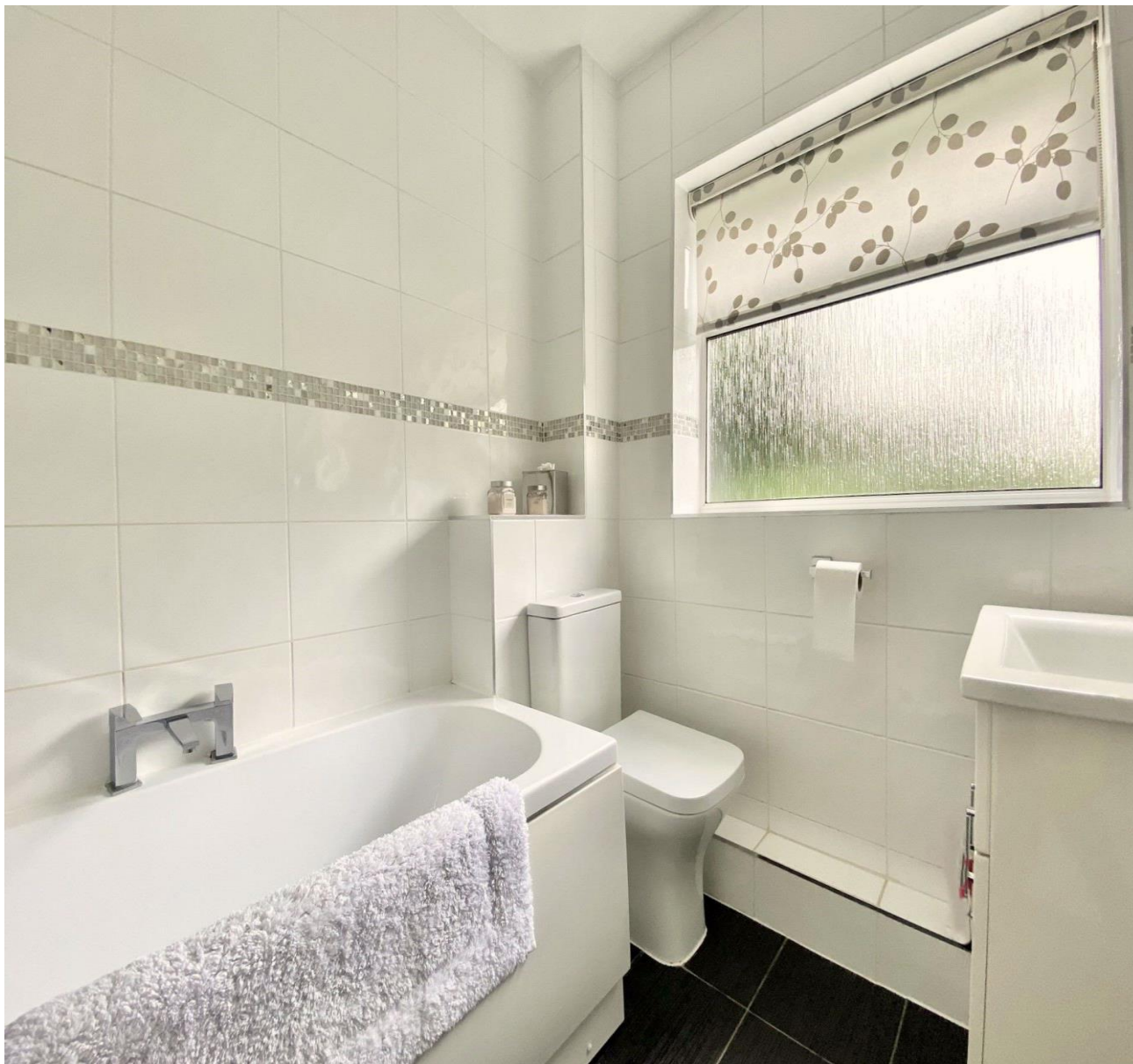
2  1  1 

With a long year lease remaining, sold with No Upward Chain and residing on the ground floor of this exceptionally convenient development, on the popular Walsall Road, this immaculate two bedroom ground floor flat benefits from dual aspect views, plenty of storage and is ready to be moved into encompassing two double bedrooms, a stylish kitchen and a modern bathroom.

A unique opportunity to purchase with a super flat as a first time purchase, downgrade or investment. To the rear are garages and to the front is plentiful space for resident and visitor parking.

Early viewing is highly recommended to avoid disappointment. CALL TODAY TO BOOK A VISIT.





Agent's Note:

Every care has been taken with the preparation of these Sales Particulars but they are for general guidance only and complete accuracy cannot be guaranteed. If there is any point which is of particular importance, professional verification should be sought. The mention of any fixtures, fittings and/or appliances does not imply they are in full efficient working order as they have not been tested. All dimensions are approximate. Photographs are reproduced for general information and it cannot be inferred that any item shown is included in the sale. These Sales Particulars do not constitute a contract or part of a contract.
Came on the market: 2nd September 2023

Property Specification

NO UPWARD CHAIN
GROUND FLOOR
TWO DOUBLE BEDROOMS
IMMACULATE AND READY TO MOVE INTO
LONG LEASE

Hall

Living/Dining Room
5.18m (17') x 3.96m (13')

Kitchen
2.84m (9'4") x 2.34m (7'8")

Bedroom One
3.25m (10'8") x 3.20m (10'6")

Bedroom Two
2.84m (9'4") x 2.39m (7'10")

Bathroom

Viewer's Note:

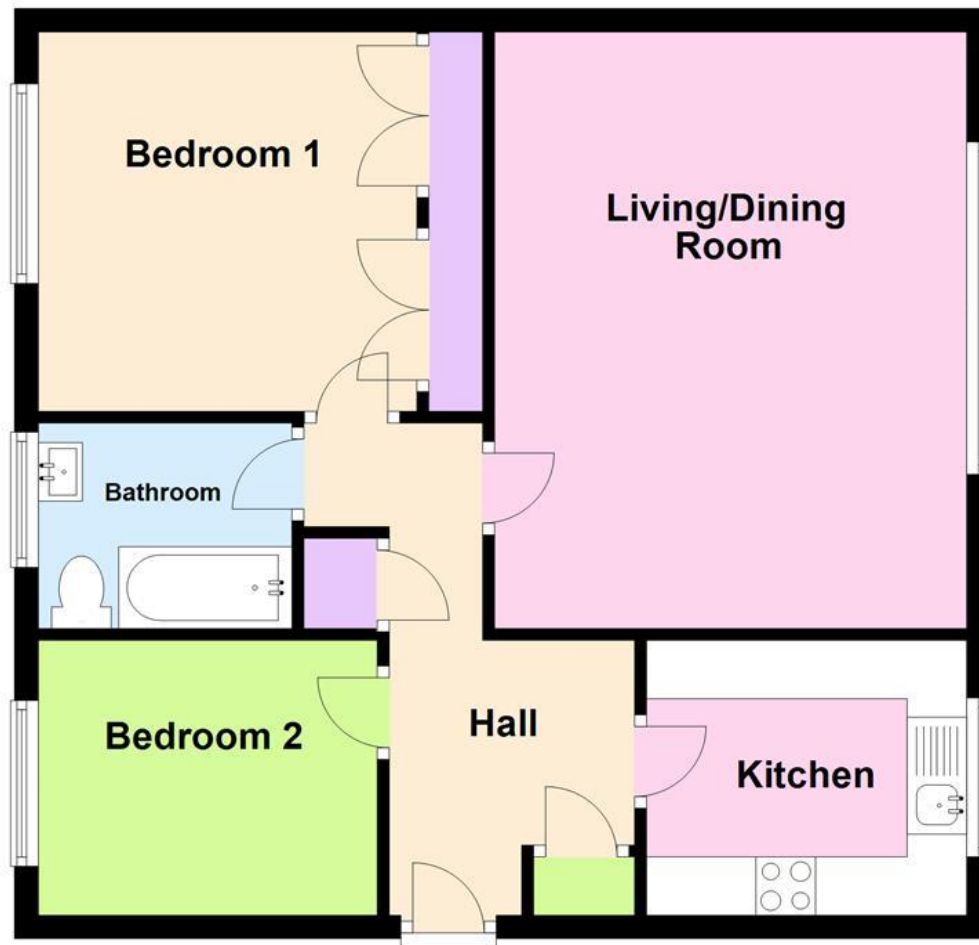
Services connected: Electric, Water and Drainage
Council tax band: B
Tenure: Leasehold TBC
Service Charge: TBC

Floor Plan

This floor plan is not drawn to scale and is for illustration purposes only

Energy Efficiency Rating

Ground Floor



Map Location

